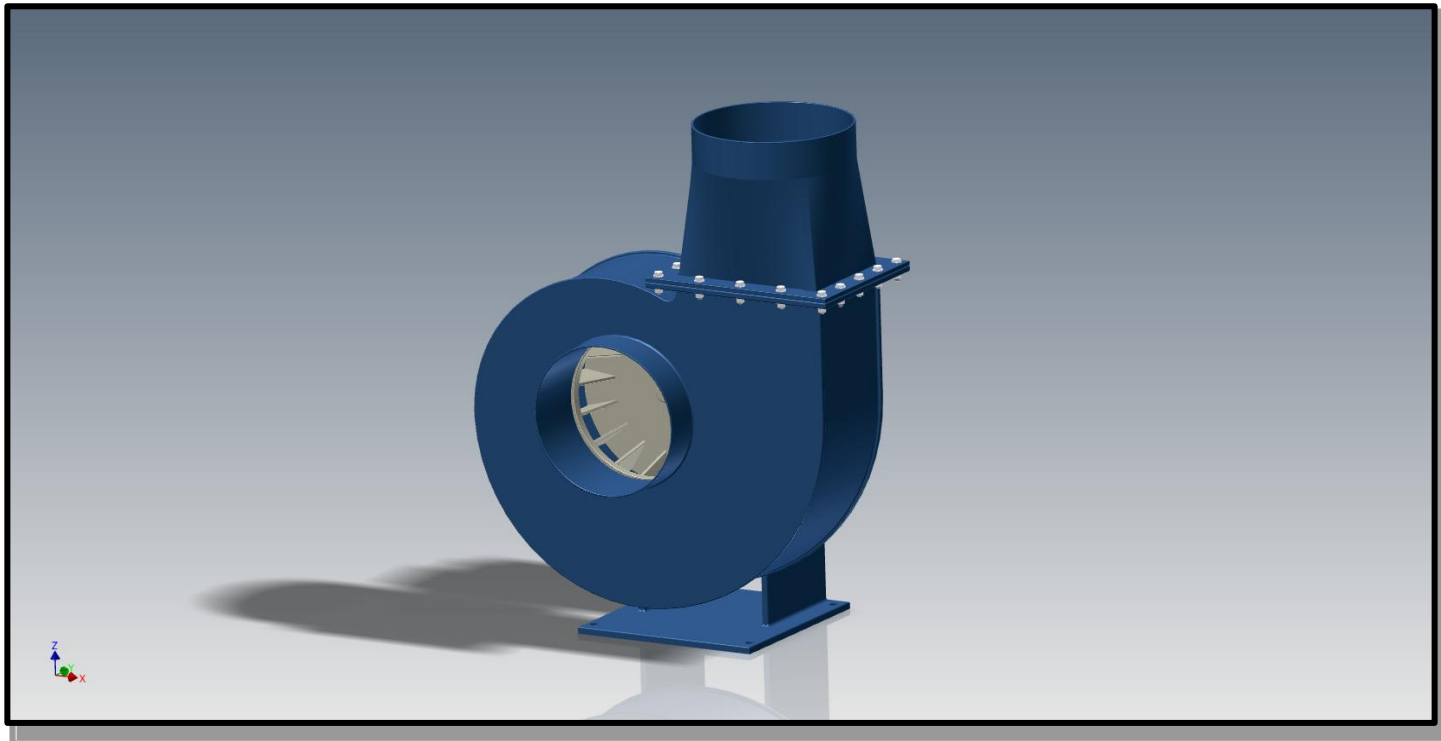
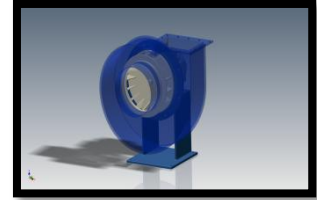




Unit 230 Ikon Trading Estate
Droitwich Road
Kidderminster
Worcestershire
DY10 4EU.
Tel: 01299 251331
Web: www.finnafans.co.uk

FC Fan Range – Size 200 - 250



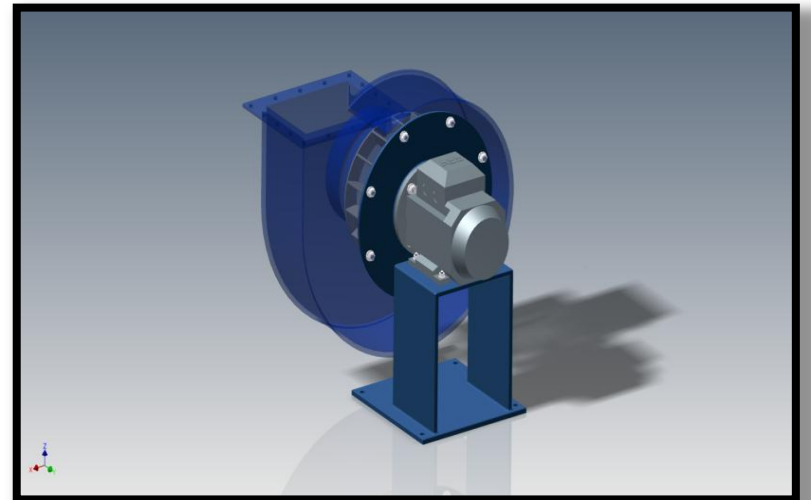
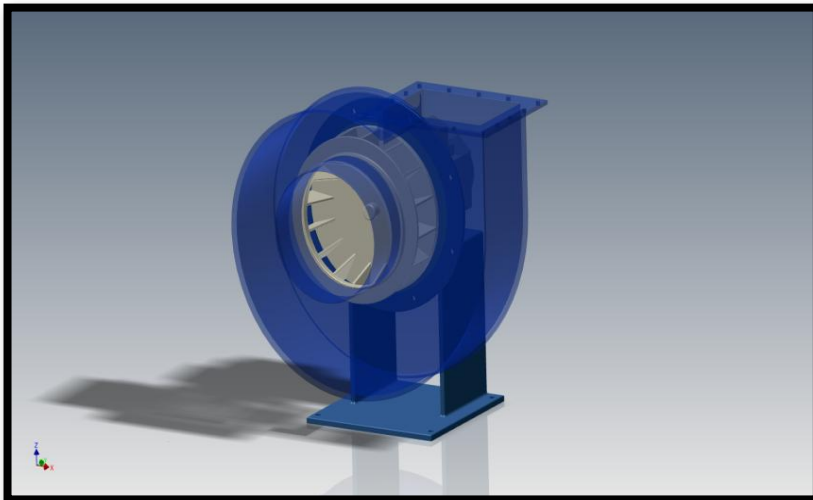
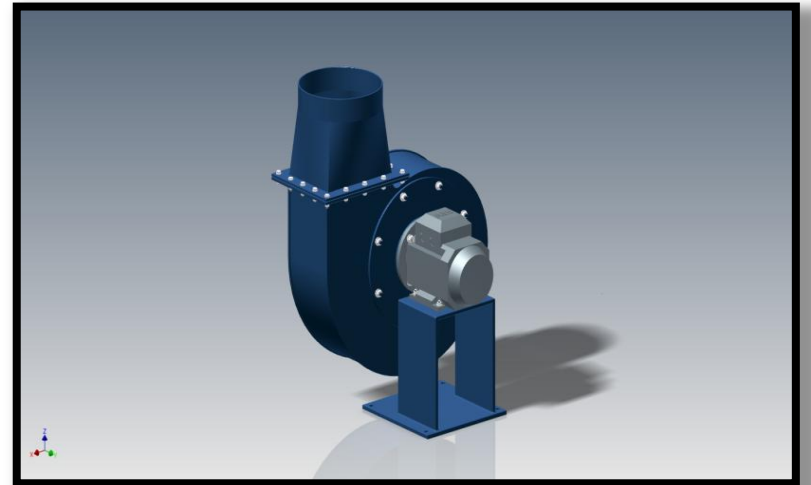
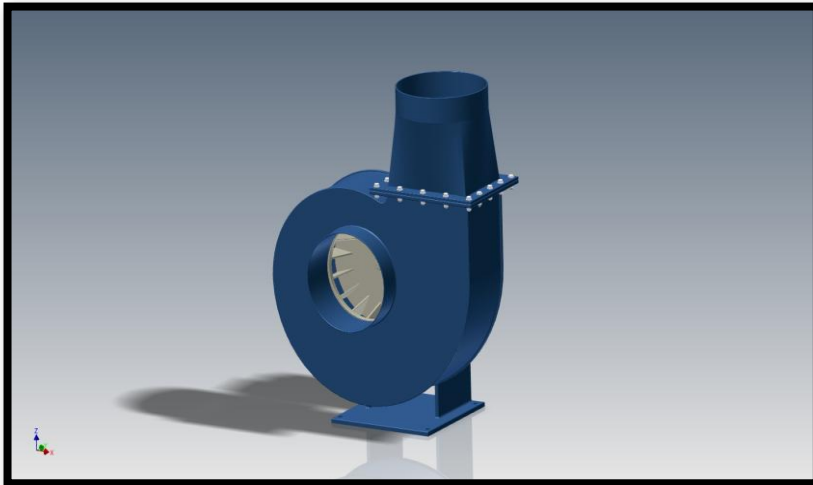


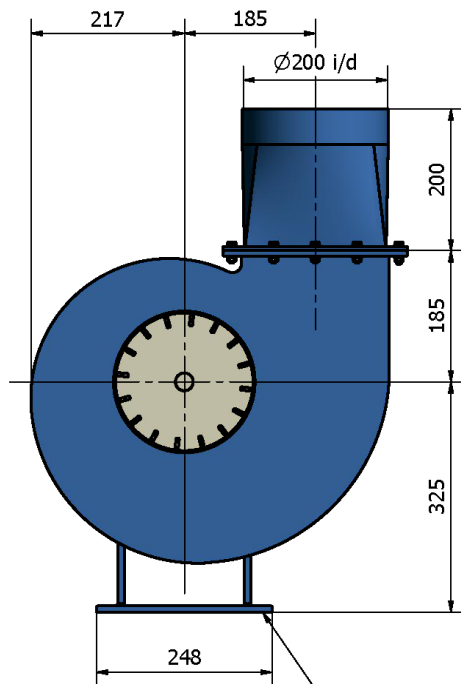
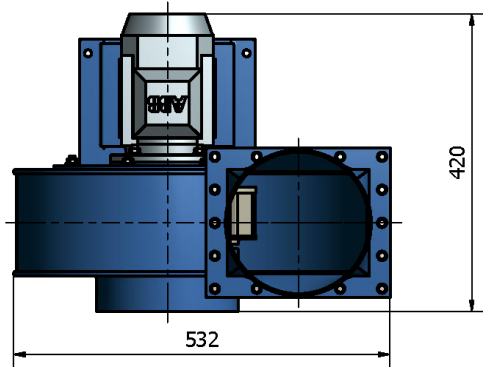
The FC range of fans has been developed with the school ventilation market in mind to provide a corrosion resistant plastic fan at a competitive price, yet still maintaining a high build quality and using only first class materials. The FC range is available in two size, FC 200 and FC 250 and with each fan case being fitted with two different size impellers to give each fan two fixed speed performance curves. The FC 200-15D & FC 250-15D are fitted with standard size impellers, and the FC 200-17D & FC 250-17D are fitted with larger impellers to give a higher pressure and a larger flow. The fans come with a rectangular discharge as standard, but are also available with a square to round, the round is finished off with a BECK ducting socket to allow easy installation of a small stack or outlet ducting. The inlet is also available with a BECK ducting socket if requested. Rubber anti-vibration mounts and flexible collars with stainless jubilee clips are also available on request.

All FC Fans are CNC machined in-house to provide a high quality, first class finish. They are available as right hand or left hand and the case can be rotated every 45° to offer flexibility at installation.

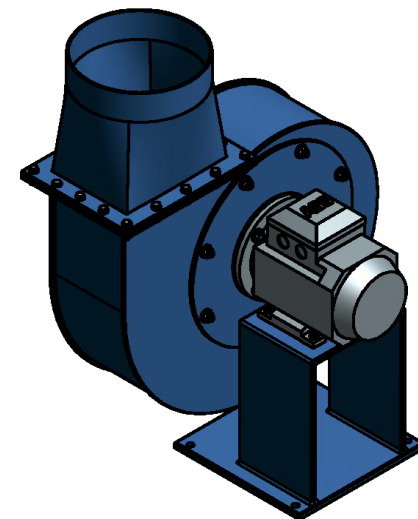
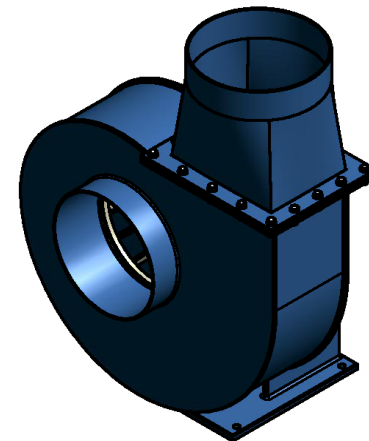
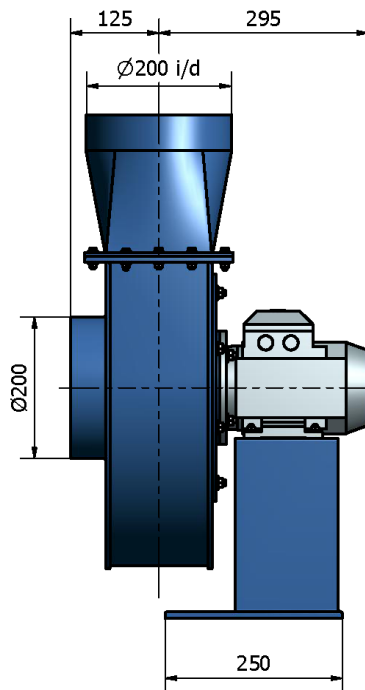
Motors are available as 400/3/50 Hz or 240/1/50 Hz at 4 pole speed. The FC range can also be fitted with local Isolators or IP66 Inverters, pre-wired from the motors to the inverters. On request the fans can also be fitted with weather guards over the motors for added protection from the elements.

Duty Range: 200 m³/hr – 2,300 m³/hr and pressures up to 550 Pa.





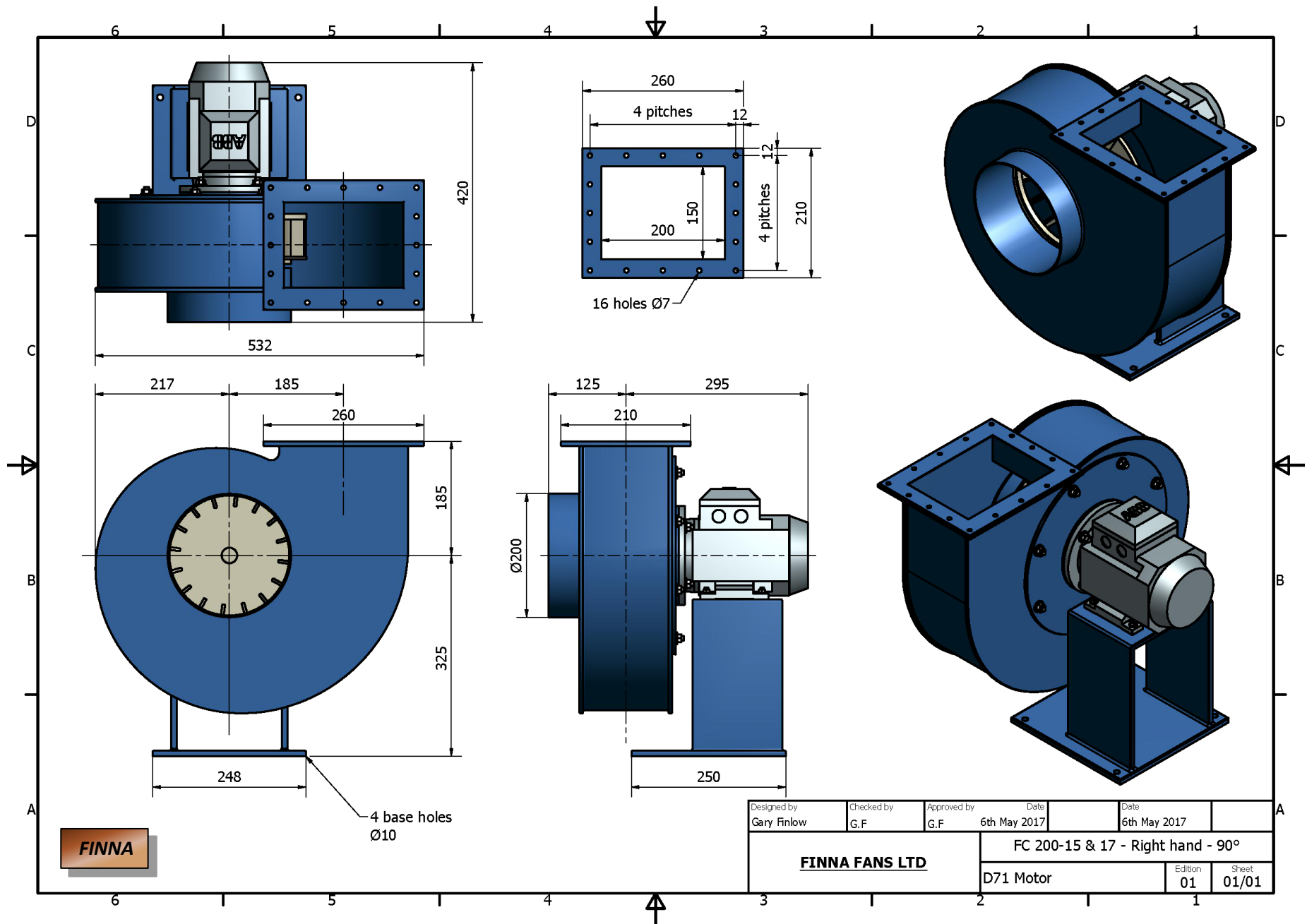
4 Base holes
Ø10



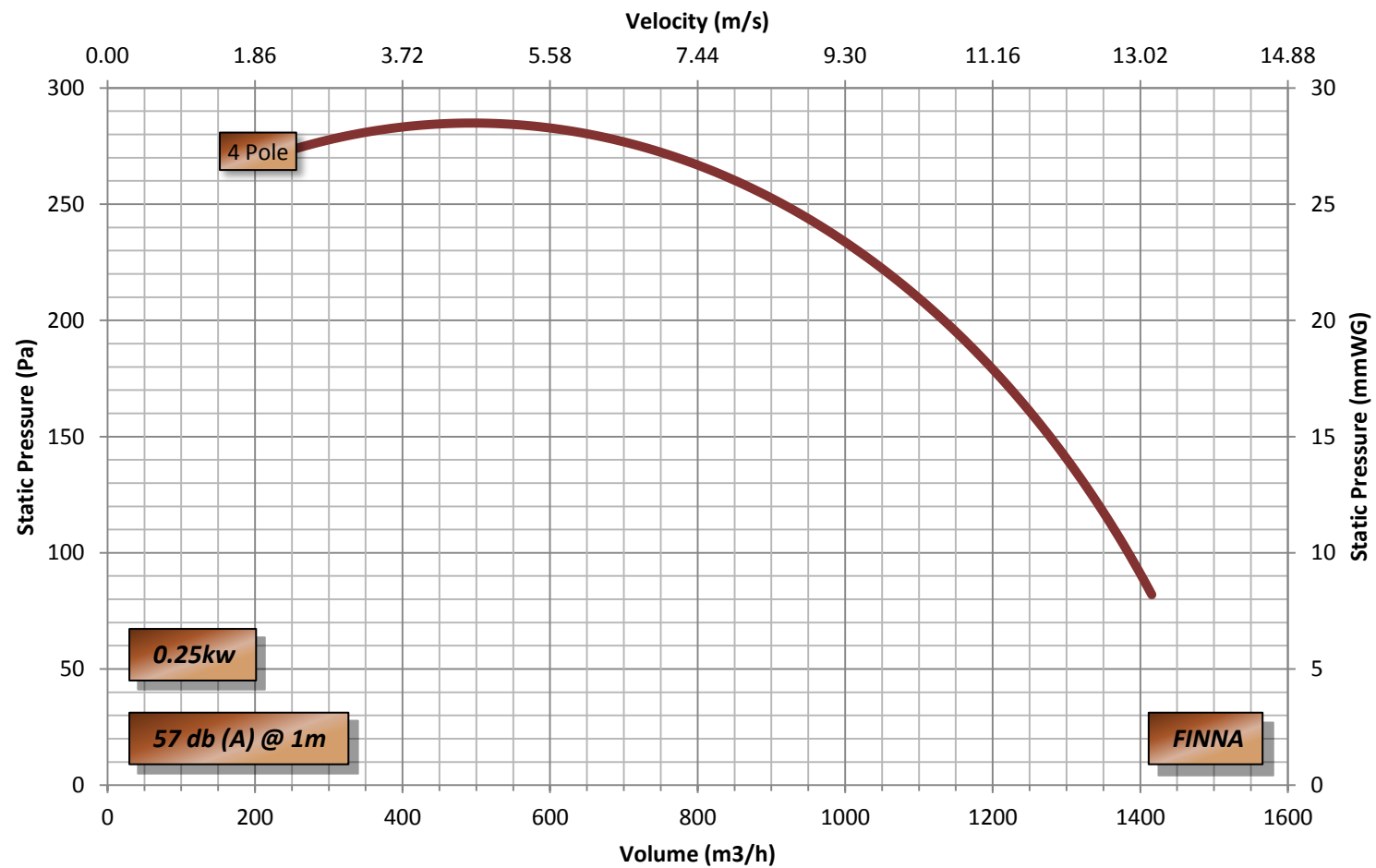
Designed by Gary Finlow	Checked by G.F	Approved by G.F	Date 20th May 2017	Date 20th May 2017	
FINNA FANS LTD			FC 200-15 & 17D Right hand - 90°		
D71 Motor			Edition 01	Sheet 01/01	

Shape "A"
Fan weight: 6kg

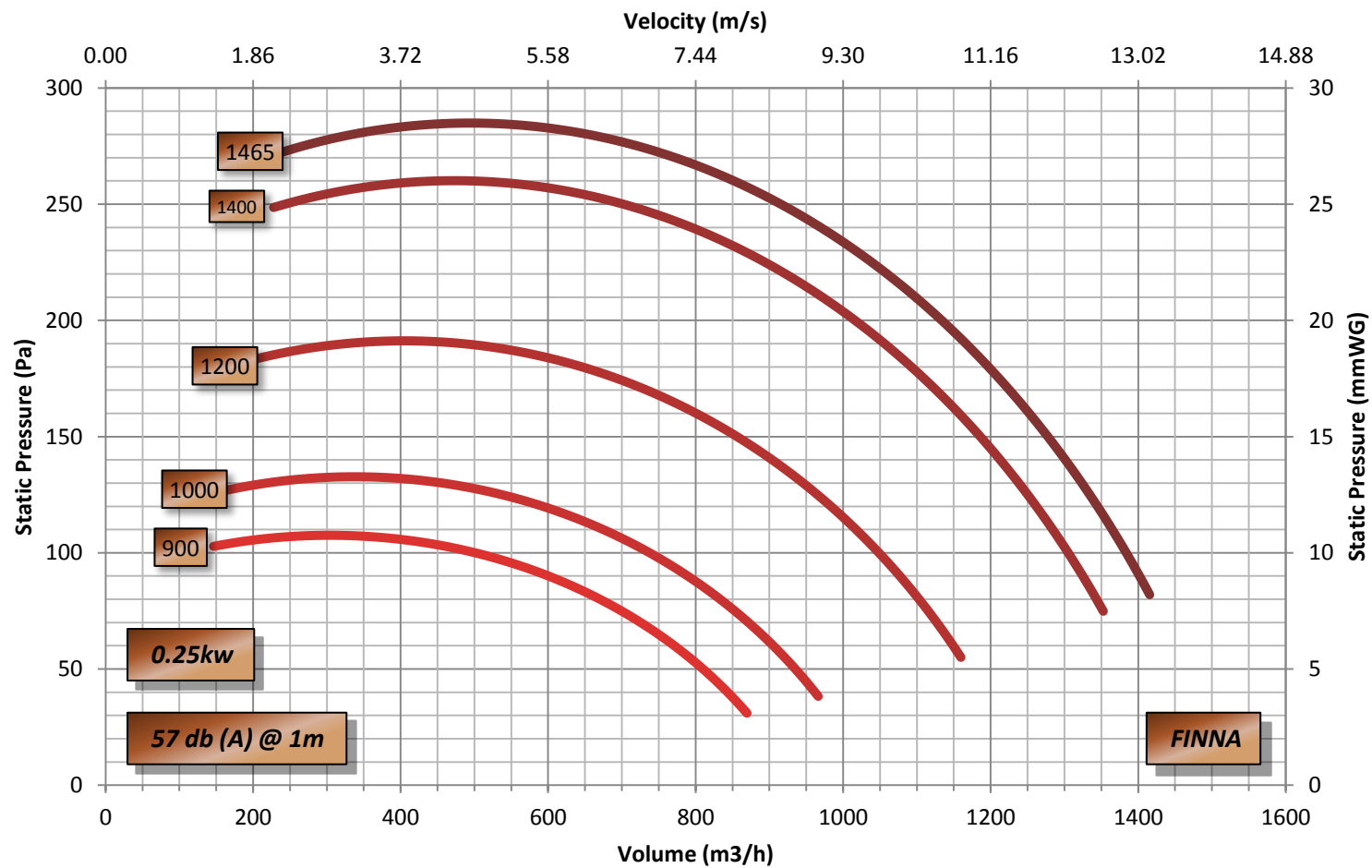
FINNA



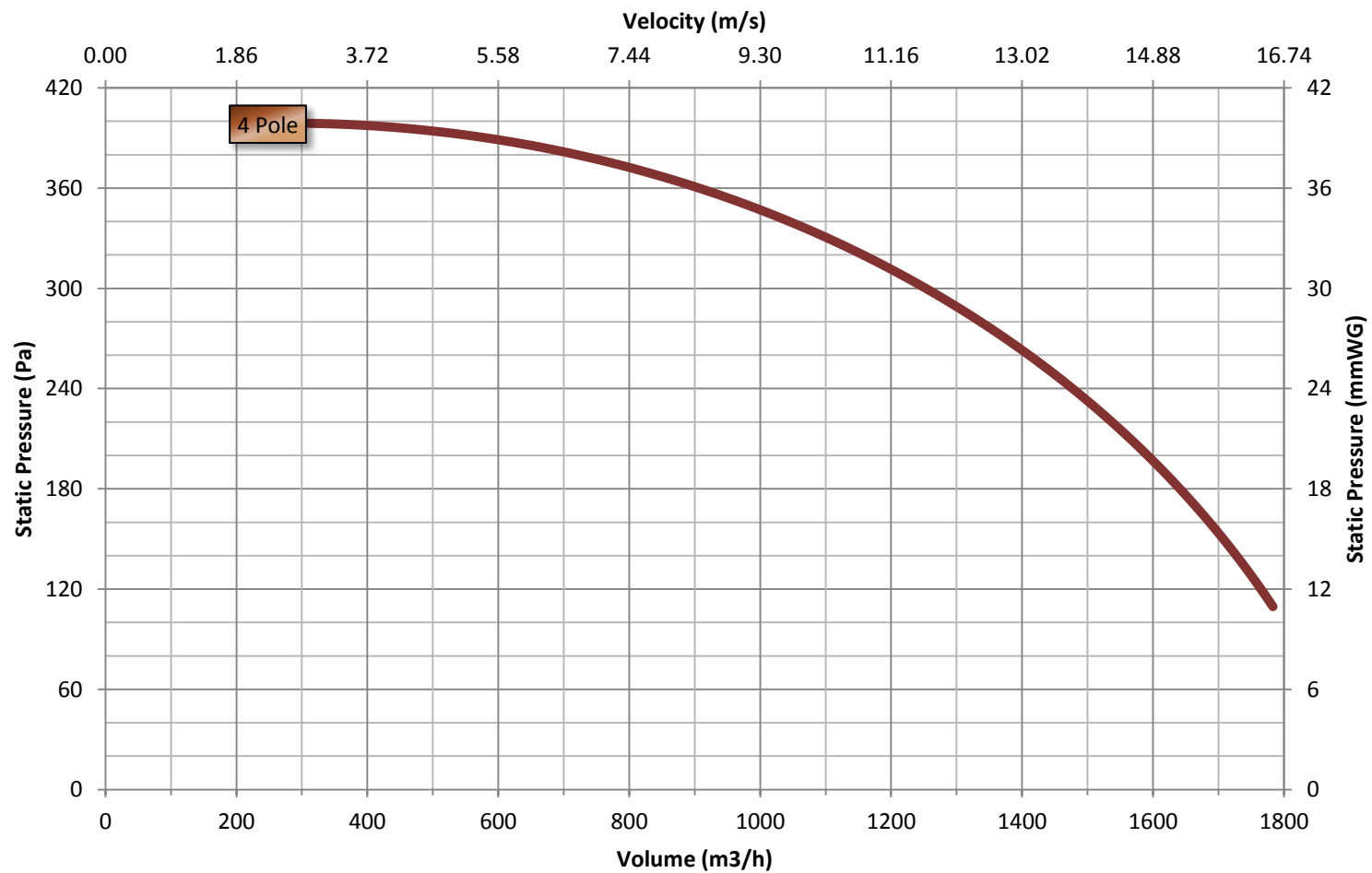
FC 200-15D Performance Curve



FC 200-15D Performance Curves



FC 200-17D Performance Curve



FC 200-17D Performance Curves

